



**ARE YOU
READY
FOR THE
FUTURE?**

WE ARE

 **suzano**
euca
fluff

From pioneering to expansion:

NEW EUCAFLUFF® LINE EXPANDS ANNUAL CAPACITY TO 440 KT/Y.

Conversion of the pulp drying machine in the Limeira mill



TECHNICAL DATA SHEET

| Eucafluff® grades

	Suzano Mill	Limeira Mill	Method
Basis weight (g/m ²)	720 (±40)	850 (±50)	ISO 536
Moisture (%)	7.5 (±1.5)	7.5 (±1.5)	TAPPI 412
Mullen (kPa)	650 (≥500)	650 (≥500)	ISO 2758
Caliper (μm)	930 (≥900)	1100 (≥1000)	ISO 534
Density (g/cm ³)	0.7 (±0.1)	0.7 (±0.1)	ISO 534
Brightness ISO (%)	88 (≥87)	88 (≥87)	ISO 2470
Dirt (ppm)	0 (≤4)	0 (≤4)	TAPPI 437
Average fiber length weighted (mm)	0.8 (±0.1)	0.8 (±0.1)	ISO 16065-2
Fiberization (%)	93 (≥91)	93 (≥91)	MTS method
Absorption time (s/g)	1.3 (≤1.6)	1.3 (≤1.6)	SCAN 33:80
Absorption capacity (g/g)	8.0 (≥6.7)	8.0 (≥6.7)	SCAN 33:80

| Standard formats available

	Nominal value	Tolerance
Diameter (mm)	1200 or 1500	±100
Width (mm)	250 or 480	±3
Core*	3"	

*Recycled cardboard coiled cover with FDA-approved virgin fiber paper.

EUCAFLUFF® IS VERIFIED BY INTERNATIONAL ORGANIZATIONS:

Eucafluff®, the world's first eucalyptus fluff, follows best-in-class international standards, demonstrating Suzano's commitment to sustainable development from end to end in our operations and offering the hygiene industry a raw material with low environmental impact.

In line with this commitment, the Suzano Track and Trace (STT) system enhances full-chain traceability and strengthens our zero-deforestation commitment by ensuring that wood is sourced exclusively from areas that were human-modified prior to 2020 - supporting audit readiness, legal certainty and proactive EUDR compliance.

Check out the organizations that have attested our best practices:



The mark of responsible forestry

The Forest Stewardship Council® (FSC®) Forest Management certification guarantees that the company complies with FSC's social, economic and environmental principles and criteria for responsible forest management, in addition to other controlled sources.



The official environmental excellence label of the European Union authorizes the use of Eucafluff® in products with the EU Ecolabel.



Eucafluff® is a raw material authorized for use in products that have the Nordic Swan Ecolabel, the official environmental label of the Nordic countries that verifies and guarantees the low environmental impact of the entire life cycle of certified products.

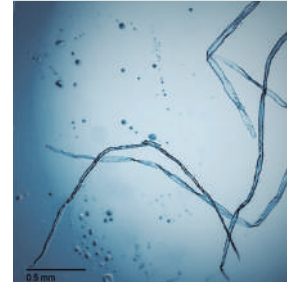


Suzano facilities that produce Eucafluff® have ISO 14001 certification, which defines the requirements for establishing and operating an Environmental Management System.

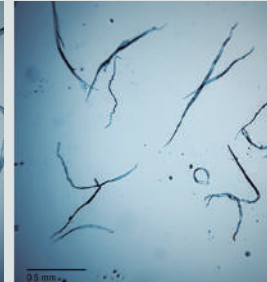


The Programme for the Endorsement of Forest Certification (PEFC) is a forest certification program that covers the entire supply chain and ensures good management practices and responsible sourcing, considering environmental, social and ethical aspects.

WHY IS EUCAFLUFF® DIFFERENT?

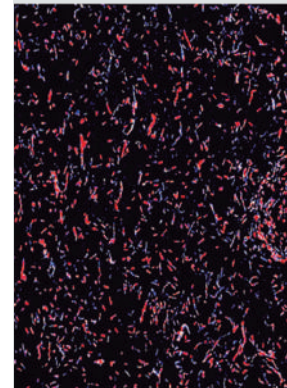


SW Fiber

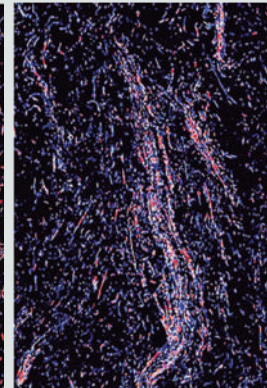


HW Fiber

Smaller and softer eucalyptus fibers enable the production of thinner, more flexible and smoother absorbent cores.



SW Fiber



HW Fiber

Due to the morphology of eucalyptus, pads made with Eucafluff® have higher density (more fibers per gram), resulting in higher liquid retention and lower rewet when compared with long-fiber pads.



THINNER AND SOFTER PANELS

Eucalyptus fibers are smaller and softer than pine fibers, enabling the production of thinner and smoother cores. Products developed using Eucafluff® provide a more comfortable and discrete option for end users.



LOWER
REWET



HIGHER
RETENTION



EXTRA
DRY SKIN



**EUCAFLUFF®
SIGNIFICANTLY**

**IMPROVES
REWET
READINGS**

As eucalyptus fluff pads have more fibers per gram, they are denser and have smaller bulk and narrower void spaces. This increases liquid retention and ensures significantly better rewet readings, providing end consumers with extra dry skin for longer.

scan to
Know more :





Higher performance and increased well-being to end consumers.

By having shorter length and thinner cell walls than long-length pine fibers, eucalyptus fibers enable the production of thinner and smoother cores. As a result, products developed using Eucafluff® are softer, thinner and more flexible, providing more discrete and comfortable options for consumers.

In addition, the superior compressibility of Suzano's eucalyptus fluff improves embossing, while also reducing core thickness. This translates into less packaging material and lower costs for the hygiene industry.

BABY DIAPERS 100% EUCAFLUFF®





LOWER
REWET

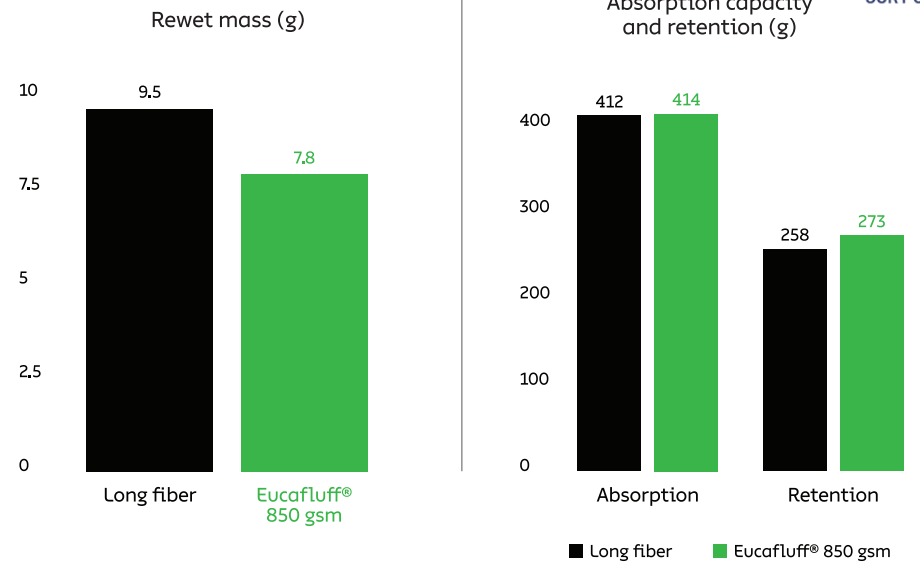


HIGHER
RETENTION



EXTRA
DRY SKIN

FREE SWELL ABSORPTION CAPACITY AND RETENTION



The CCS design logo is property of CCS and no reproduction allowed without prior consent.

FEMININE CARE 100% EUCAFLUFF®



LOWER REWET
EXTRA DRY SKIN



THINNER
AND SOFTER
PANELS



FREEDOM
TO BE ACTIVE

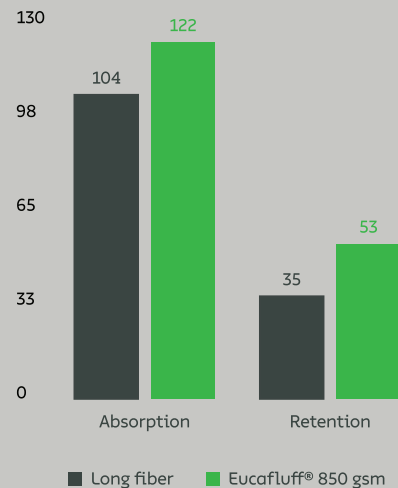
FREE SWELL ABSORPTION CAPACITY AND RETENTION



Rewet mass (g)



Absorption capacity and retention (g)



GREATER COMPACTION, LOWER COST.



18%

LESS PACKAGING
MATERIAL

13%

LESS VOLUME
FOR LOGISTICS

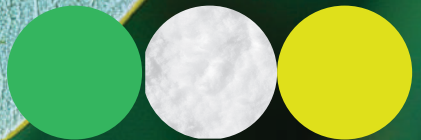
100%
long fiber



100%
Eucaluff®



LET'S CO-CREATE THE FUTURE OF THE HYGIENE INDUSTRY



Scan to know more

 AsiaEucafluff@suzano.com.br

 www.suzanoeucafluff.com.br/cn

 [linkedin.com/showcase/eucafluff](https://www.linkedin.com/showcase/eucafluff)

 **suzano**
eucafluff